

Product information

Bullito F060 – F140

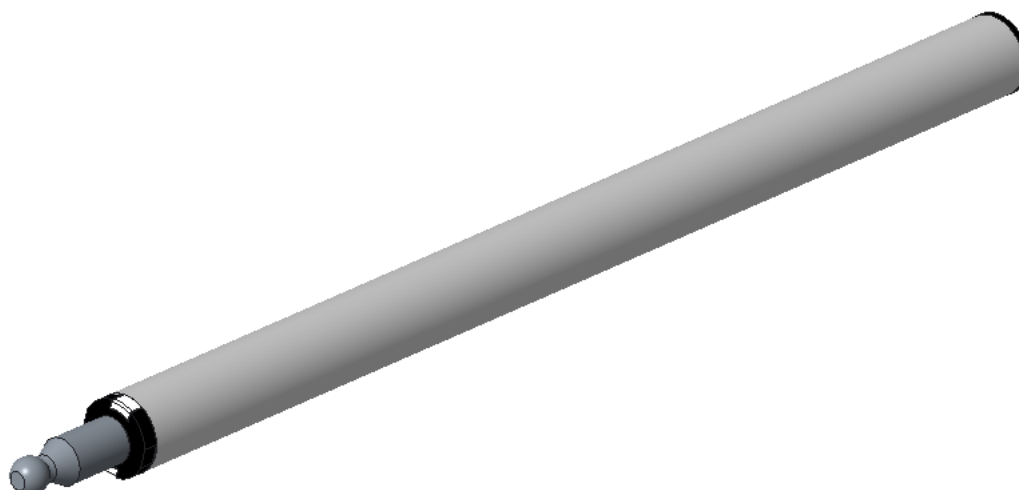
THE
KNOW-
HOW
FACTORY

ZIMMER GROUP

Am Glockenloch 2
77866 Rheinau
T +49 7844 9110-0
info@daempfungssysteme.de
www.zimmer-group.com
www.zimmer-softclose.shop

General data:

Type of product:	Fluiddamper with 60 - 140 mm stroke
Origin :	Rheinau, Baden- Württemberg, Germany
Lifetime:	250.000 cycles
Installation option:	Sliding door Drawer

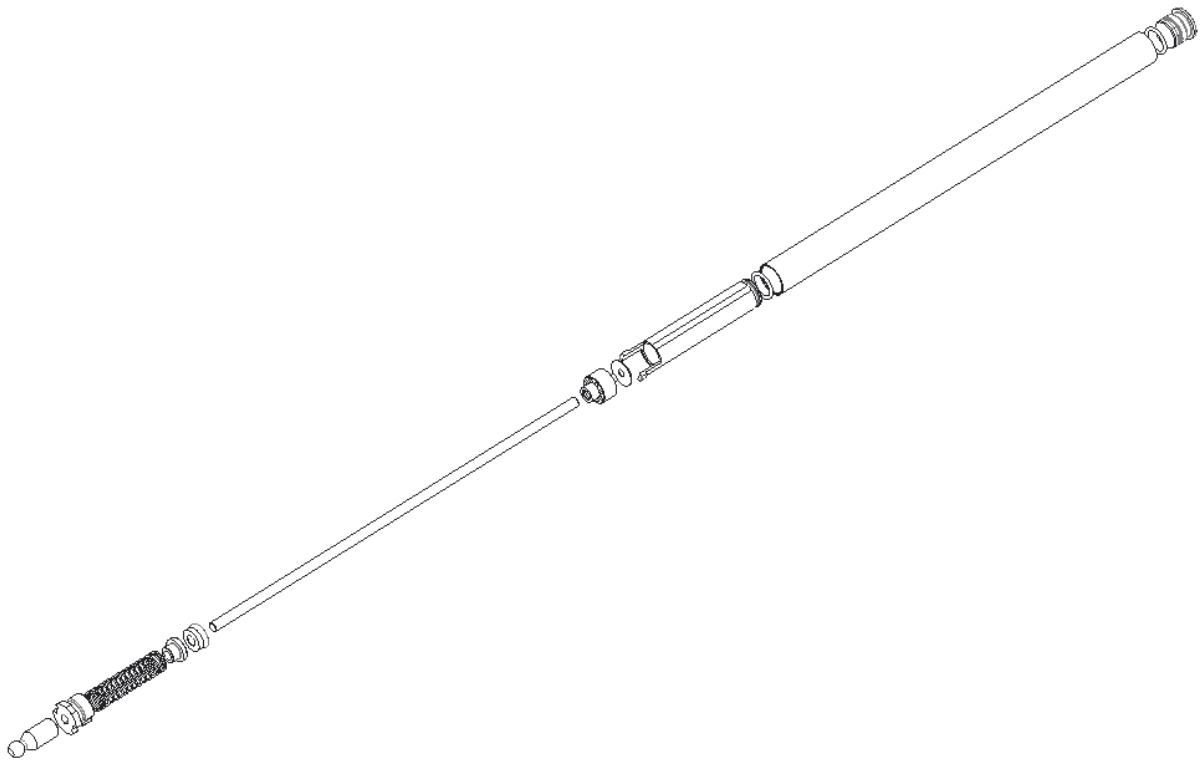


With the new Bullito fluid damper series, Zimmer Group closes the gap between furniture and industrial applications. Dimensions of the damper specially designed for your needs are available from small quantities. These individual fluid dampers made of stainless steel convince of a high force with a longer lifetime in highest quality requirements.

Index

1. Content.....	3
2. Function.....	3
3. Technical data	4
4. Characteristics.....	4
5. Integration	4
6. Accessories.....	5
7. Damper characteristic	6
8. Technical drawing.....	7
9. Test procedure	8
10. Materials.....	8

1. Content



2. Function



Bullito damper have a stroke from 60 mm up to 140 mm and do their work in the closing direction. In the opening direction, the stainless steel piston rod can be pulled out with almost no force. Maximum flexibility with the new Bullito: An individual design, the power and the stroke, the total length and even various connection options can be selected individually by the customer.

3. Technical data

Housing length [mm]:	123,3 – 217,3
Housing diameter [mm]:	10,0
Piston rod diameter [mm]:	3,0
Stroke [mm]:	60 - 140
Return spring	possible
Maximum weight to be braked [kg]:	200
Lifetime [cycles]:	250.000
Release:	no
Operating conditions [°C]	+10 <-> +40
Storage conditions [°C]	-20 <-> +80

4. Characteristics

Extract damper	
Push damper	<input checked="" type="checkbox"/>
Fluid damper	<input checked="" type="checkbox"/>
Air-friction damper	
Different damping characteristics	

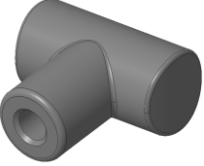
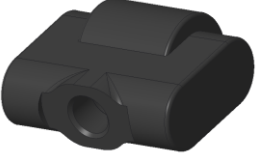
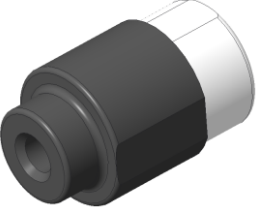
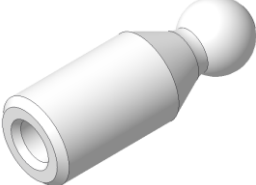

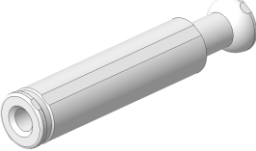
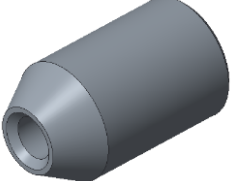
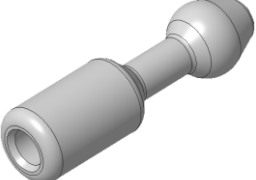
5. Integration

Main application:

Sliding door	<input checked="" type="checkbox"/>
Drawer	<input checked="" type="checkbox"/>
Hinge	
Flap	

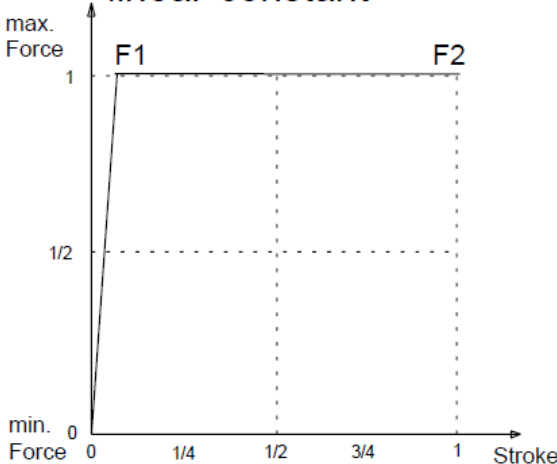
6. Accessories

Coupler

	T-coupler
	Coupler (available)
	Bumper
	Ballhead (available)
	Cylinder head
	Cylinder head with constriction
	Magnet head (available)
	Spear head (available)

7. Damper characteristic

core measurement curve
linear-constant



9. Test procedure

Test	Requirements according to Zimmer	Requirements Zimmer met
Long-term test	250.000 cycles at 0,25 m/s	✓
Over stress test	10 cycles at 1 m/s	
Storage test	-20°C to 80°C	✓
Climate test	10°C to 40°C	✓

10. Materials

Housing:	1.4301
Spring:	EN10270-3
Piston rod:	X5CrNi18-10
Oil	Silicon oil
Coupler:	POM / PA6 GF30
Disk:	PET/ POM
Piston	POM
Cap:	POM
Sealing	NBR